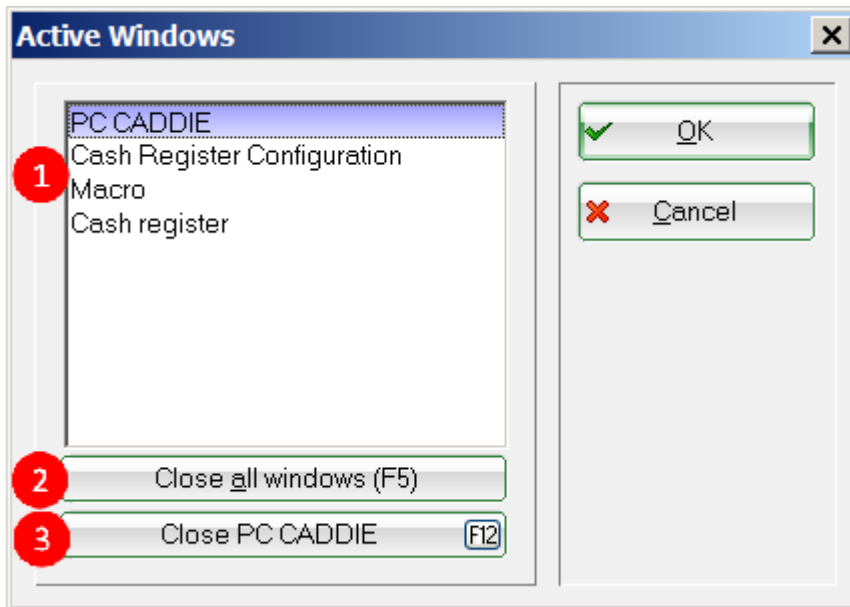


Windows

You can see all the active windows under **Setup/Window**:



1. Select the window you want to use and press **OK**.
2. Close all windows (F5).
3. You can also close the entire program from here (F12).



You also have a good overview of all the opened windows on the right panel, under **Opened windows**, which can also be used for switching between windows.

Opened windows


PC CADDIE


Cash Register Configuration


Macro


Cash register





 Opened windows


 Shortcuts

 Persons

 HCP Handicaps

 Accounts

 Competitions

 Timetable

 Article