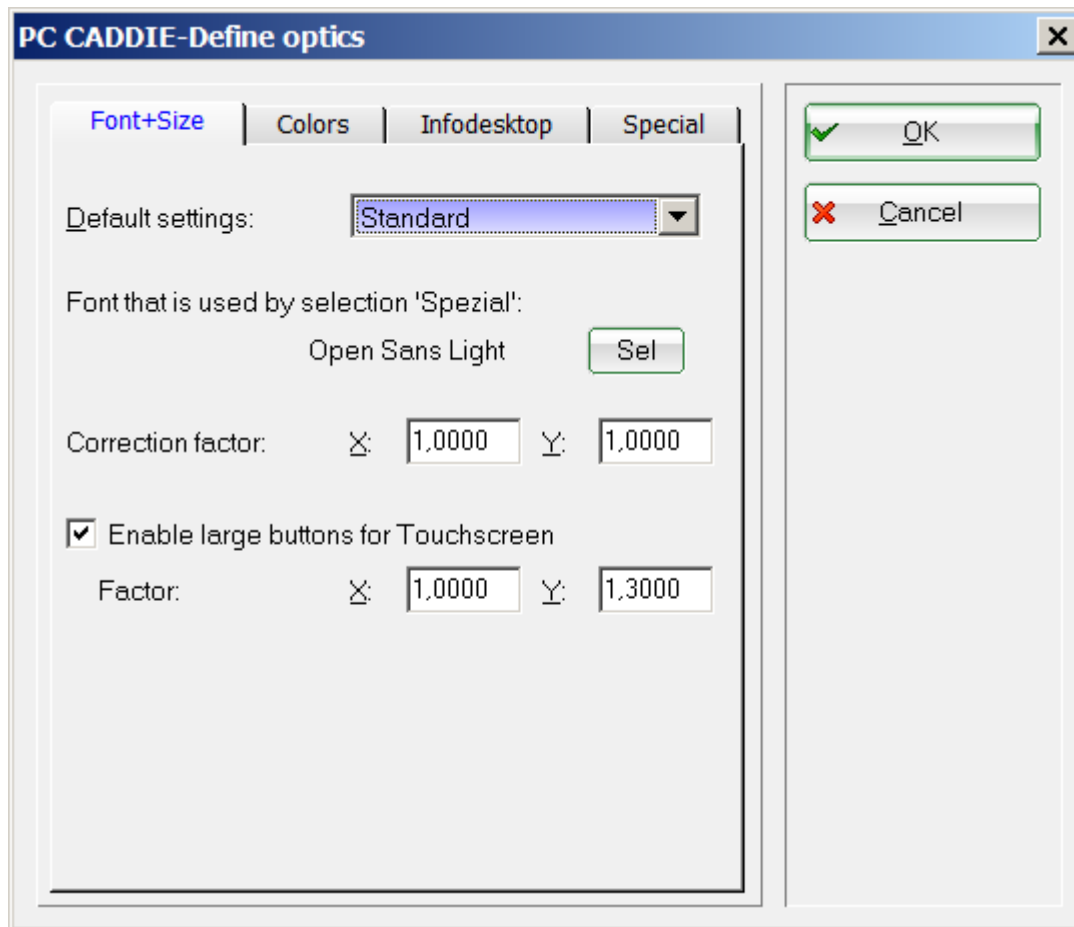


# PC CADDIE user interface configuration

You can locally customize the look of the PC CADDIE program via **Setup/Program Options/Display font**.

## Font+ Size

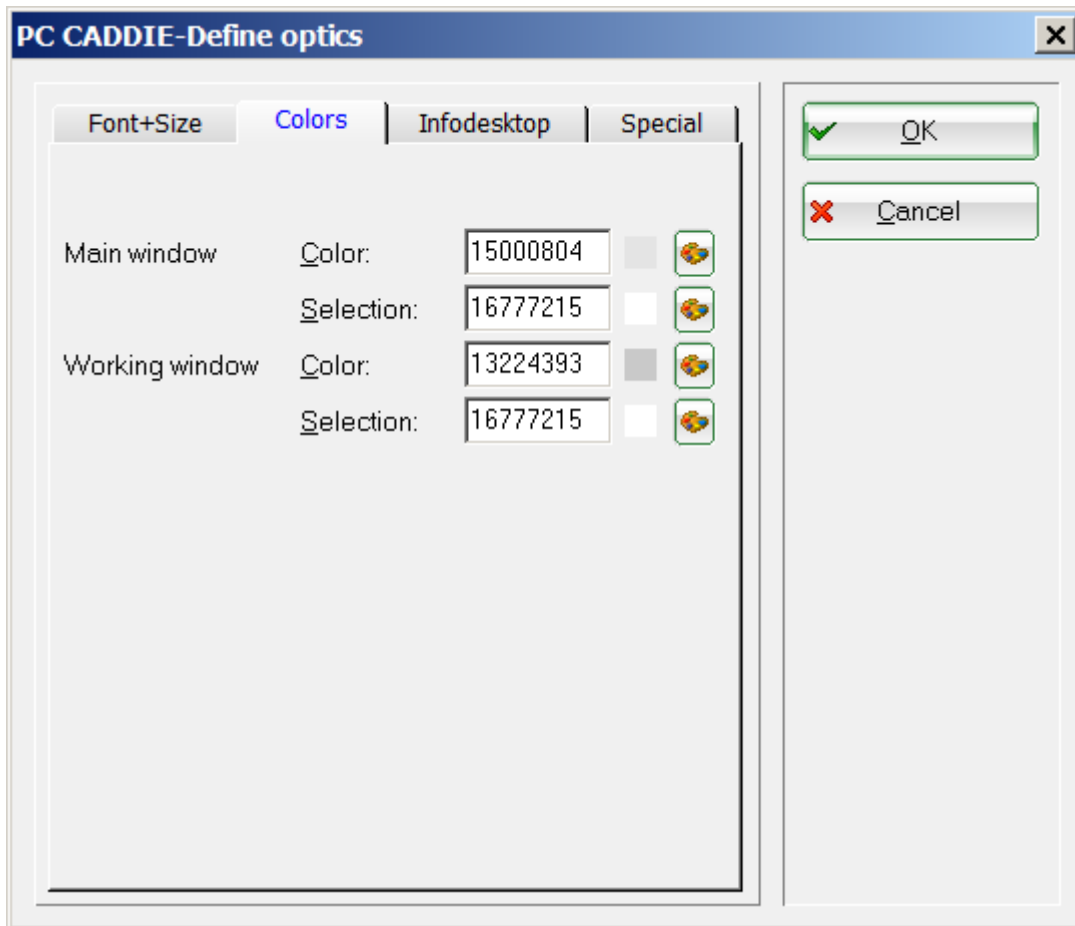
The first tab allows you to configure the font and the size of the buttons:



HINT: The font size is set under the **Basic settings**. We particularly recommend that you check the **Enlarged buttons for touchscreens** box for POS computer with touch screens. Confirm with **OK**.

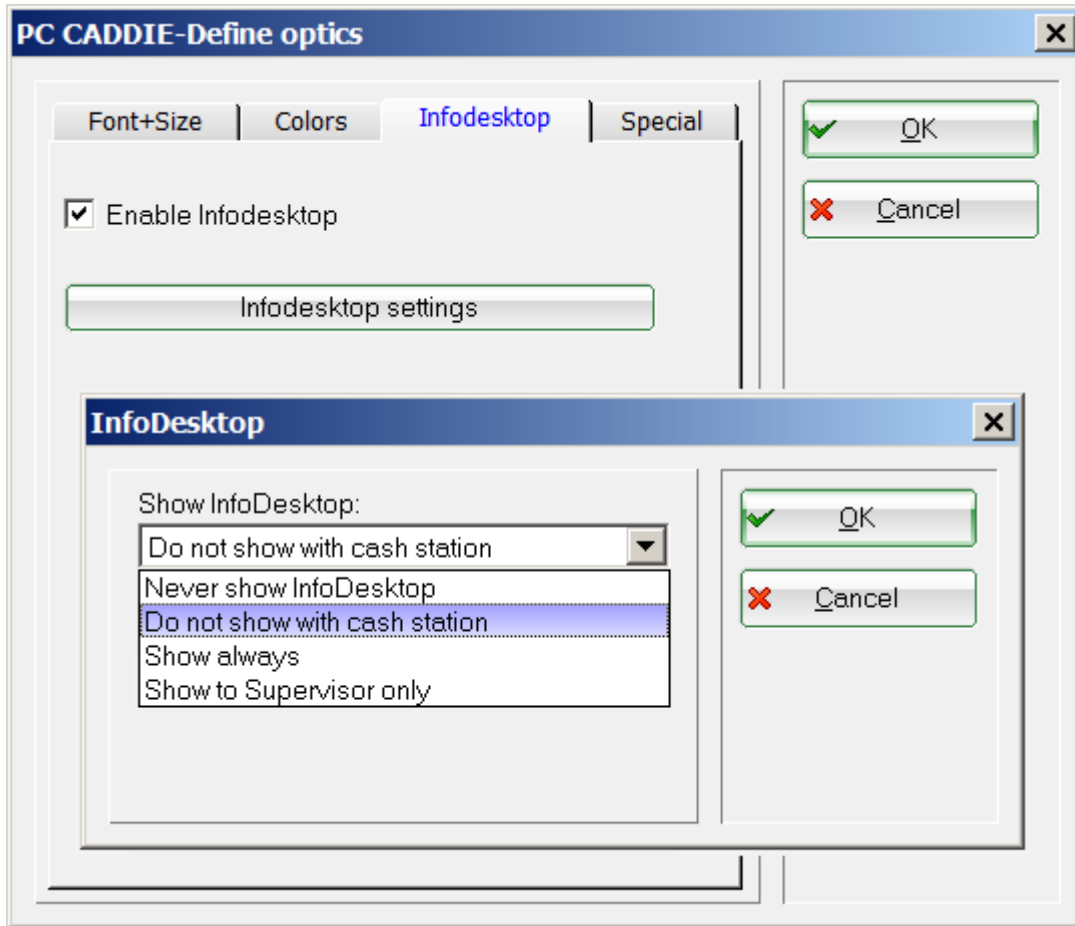
## Colors

Here you can individually adjust the colors for your PC CADDIE. We advise you use colors pleasing to the eye. Confirm your changes with **OK**.



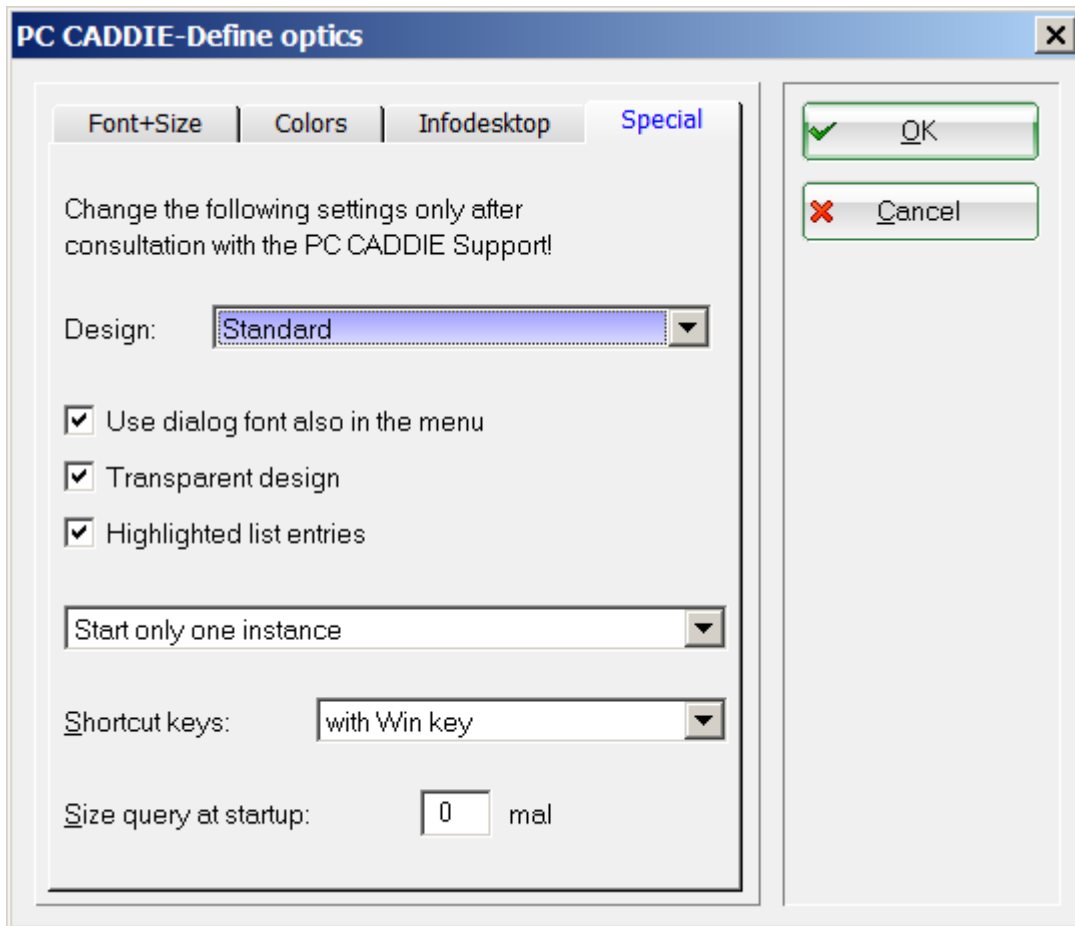
## Info desktop

Activate the [PC CADDIE Info desktop](#) by checking the box *Activate Info desktop*; confirm with **OK**. The info desktop is deactivated by default for checkout stations. If you have admin rights for your PC CADDIE program you can make the Info desktop settings here: [Password management](#). You can choose between the following settings:



## Special

Please do not change these settings without consulting with the PC CADDIE Support team!



 You must restart PC CADDIE to apply your changes.